



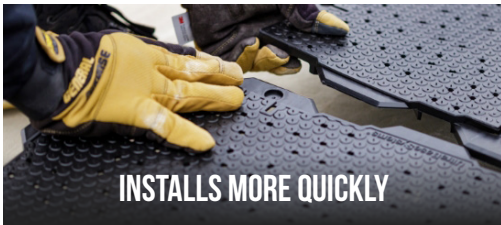
# TIME IS MONEY

Move over traditional crushed rock foundations. Ultra Base Systems streamline installation, reduce site disruption, and save turf installers money while providing a base that yields improved drainage, performance and versatility.

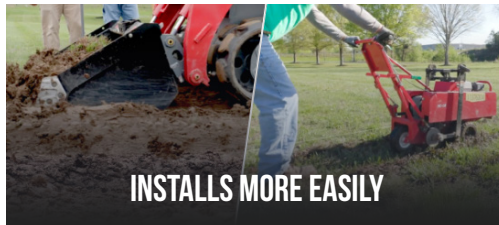
- ✓ Less time to coordinate trades and deliveries
- ✓ Less direct labor to prepare foundation and install base
- ✓ Less cost to fixed damaged areas
- ✓ Fewer quality issues - short term and long term



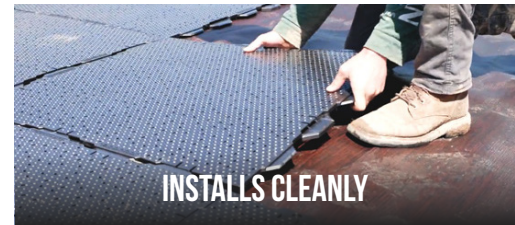
## BENEFITS OF ULTRA BASE OVER CRUSHED ROCK



Ultra Base panels can reduce install time by approximately 40%.



Simplified base preparation process and requires no heavy equipment.



With no heavy equipment, damage to construction sites is minimized.



Drains better, faster and more consistently than crushed rock bases.



Ultra Base consistently provides a more solid, load-bearing, interlocked base.



Ultra Base is ideal for creating bases in hard to reach or limited access areas.

## ULTRA BASE PANELS VS. TRADITIONAL ROCK BASE

This case study is based on an installation of approximately 1,000 square feet.

MATERIALS NEEDED	TRADITIONAL ROCK BASE	ULTRA BASE PANELS
	<b>COST*</b>	<b>COST*</b>
Aggregate Base/Rock	\$1,400	\$0
Skid Steer	\$850	\$0
Plate Compactor	\$85	\$85
Equipment Delivery & Fees	\$450	\$20
Sod Cutter	\$0	\$120
Nailer Board Materials	\$800	\$0
Geotextile Fabric	\$800	\$800
UB Panel Systems (Champion E-Series)	\$0	\$3,000
<b>Total Time</b>	<b>6hrs 30min</b>	<b>2hrs 30min</b>
<b>Total Labor Cost**</b>	<b>\$690</b>	<b>\$240</b>
<b>Total Cost</b>	<b>\$5,075</b>	<b>\$4,265</b>



A 3 PERSON TEAM INSTALLING  
ULTRA BASE PANELS

+



SAVES 12 MAN-HOURS  
PER 1,000 SQ FT

=



**TIME IS MONEY**

“  
OUR BASE PANELS ARE  
USED IN MULTIPLE APPLICATIONS.  
THEY'RE PERFECT FOR ROOFTOPS  
AND PET FACILITIES. THE EXTRA  
DRAINAGE IS REALLY  
VALUABLE.”

*\*Disclaimer: Prices of glue and other installation accessories are determined based on comparisons with similar competitor models and are subject to change without notice. Actual prices may vary.*

**\*\*Foreman and two laborers**

**TRADITIONAL ROCK BASE PHOTO GALLERY**



**ULTRA BASE PANELS PHOTO GALLERY**



**THE EXPERT'S VIEW**

[Watch this video](#) to see why the artificial grass installation experts at XGrass prefer Ultra Base over crushed rock bases for many installations.